

## Model 400/450 Mounted Sentry with Outlet Plenum



### Model # SS-400/450-MSP

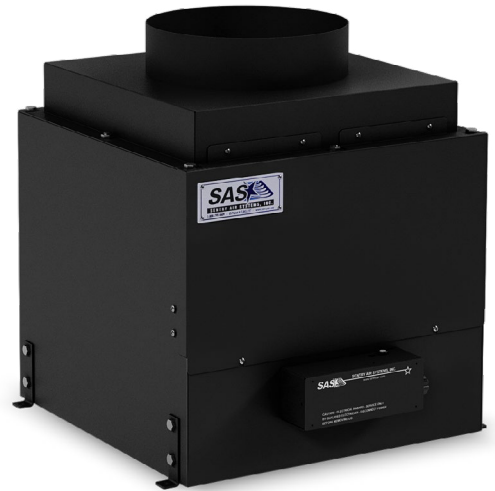
The **Model 400/450 Mounted Sentry with Outlet Plenum** primarily exhausts filtered air to a remote location but can also be utilized to create a positive-pressure environment. The 12" diameter exhaust collar allows filtered air to be exhausted outside, or into the facility's central exhaust system or ductwork. When combined with **HEPA** or **ULPA** filtration, this unit can be utilized to create positive-pressure to provide airflow with reduced particulate to the enclosure or create a compact clean room. Also, this system has the option of remaining ductless to recirculate filtered air back into the immediate area.

Typical fume control applications for this unit include *laser marking, printing fumes, soldering fumes, fume/vapor source capture, pharmaceutical powder control, chemical fume exhaust, enclosed machinery mounting, and many other applications that produce particulate, smoke, dust, and fumes.*

Positive-pressure applications include *hard drive restoration, computer and electronics repairs, sterile assembly, medical device manufacturing, cleaning optics and lasers, stem cell therapy, tissue culturing, and more applications that require a clean room environment.*

High-quality filter media for this unit depends on the application, but typically includes **HEPA** filters [up to 99.97% efficiency on particles 0.3 microns and larger], **ULPA** filters [up to 99.9995% efficiency on particles 0.12 microns and larger], **ASHRAE** filters [up to 95% efficiency on particles 0.5 microns and larger], **activated carbon**, and **specialty-blended filtration media** [i.e. acid gas, mercury, aldehyde, and ammonia]. The **Mounted Sentry with Outlet Plenum** allows multiple filter media to be housed inside the filter chamber for applications that emit both particulates and fumes.

*The Mounted Sentry is available in two smaller models [SS-200-MSP & SS-300-MSP] and one model without the outlet plenum [SS-400/450-MS].*



Model 400/450 Mounted Sentry with Outlet Plenum

### Product Features

- **Includes:** variable speed controller, 12" exhaust collar plenum, and mounting brackets
- **Optional:** Magnehelic Gauge and hour counter
- Quiet, reliable, low maintenance operation
- Sturdy construction
- Simple, quick "no tool" filter change
- Long filter life
- Attractive appearance

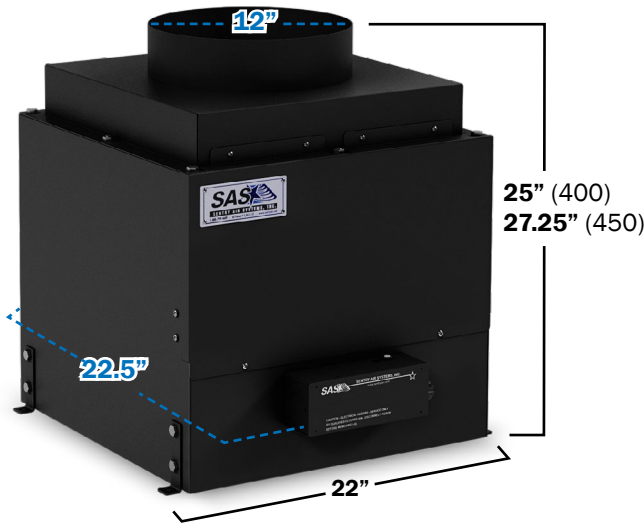


21221 FM 529 Rd, Cypress, TX 77433  
1.800.799.4609 • sales@sentryair.com

[www.sentryair.com](http://www.sentryair.com)

# Fume & Particulate Removal

## Product Specifications



Dimensions are approximate.



21221 FM 529 Rd  
Cypress, TX 77433  
1.800.799.4609  
sales@sentryair.com

[www.sentryair.com](http://www.sentryair.com)

<b>Base Unit Dimensions (L x W x H)</b>	<b>400:</b> 22.5" x 22" x 25" <b>450:</b> 22.5" x 22" x 27.25" <i>(includes control box in length, brackets in width, &amp; inlet/outlet collar in height)</i>
<b>Outlet Plenum Dimensions</b>	12" diameter
<b>Inlet Config.</b>	6" or 10" diameter
<b>Cabinet Material</b>	16 ga. carbon steel
<b>Weight</b>	Approx. 50 - 110 lbs.
<b>Air Volume (approximately)</b>	<b>400:</b> 50 - 700 CFM <b>450:</b> 0 - 877 CFM <i>(from low to high)</i>
<b>Electrical</b>	<b>400:</b> 115/1/60, 2.5 amps 220/1/50 or 60, 1.5 amps <b>450:</b> 115/1/60, 5.2 amps 8' grounded power cord with NEMA 5-15P plug
<b>Sound Level (3' from inlet)</b>	<b>400:</b> Approx. 60 dba <i>(high)</i> <b>450:</b> Approx. 71 dba <i>(high)</i>
<b>Main Filter Options</b>	<i>Depending on the Application:</i> <b>400 - Chemical:</b> Activated Carbon Specialty-Blended Filter Media [i.e. acid gas, mercury, aldehyde, and ammonia] <b>400 &amp; 450 - Particulate:</b> HEPA [up to 99.97% efficiency on particles 0.3 microns and larger] ASHRAE [up to 95% efficiency on particles 0.5 microns and larger] ULPA [up to 99.9995% efficiency on particles 0.12 microns and larger]
<b>Patent #</b>	5,843,197